

# Origin Script Tool and Toolbar

This document contains installation and usage instructions for the Origin Script Tool and Toolbar. The Origin Script Tool was designed to meet a number of customer needs. It is primarily intended as a vehicle to provide example LabTalk scripts. This release of the Origin Script Tool contains twenty-four well documented scripts that demonstrate how to use various LabTalk commands and object properties and methods. The Script Tool is also intended to be a convenient user interface for organizing, selecting, displaying, and executing any one of a large number of LabTalk scripts. Finally, a number of the example scripts provided are useful programs in and of themselves. The Origin Script Toolbar provides additional functionality that developers of LabTalk scripts may find useful.

## Contents

I. INSTALLATION .....	2
II. THE ORIGIN SCRIPT TOOLBAR .....	2
III. THE ORIGIN SCRIPT TOOL.....	3
IV. ADDING NEW CATEGORIES AND SCRIPTS .....	4
V. PRE-DEFINED SCRIPTS BY CATEGORY .....	5

## I. Installation

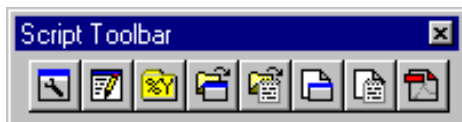
To install the Origin Script Tool and Toolbar:

1. Download and save the Origin Script Tool and Toolbar from the OriginLab web site. The downloaded file is named OScriptTool.opk.
2. Launch Origin 6.1 (or later) and then left-click on and drag the downloaded file OScriptTool.opk into the Origin work space. The Origin Script Tool and Toolbar will automatically be installed.

Installing the Origin Script Tool and Toolbar creates a \Scripts subfolder in the Origin software folder. The \Origin\Scripts subfolder contains some Script Tool and Toolbar source files and an additional subfolder for each category of scripts in the Origin Script Tool. Each category subfolder contains the script files (files of type \*.OGS) for the scripts in that category. For example, the \Origin\Scripts\Analysis subfolder contains the script files for all the scripts in the Analysis category of the Origin Script Tool.

## II. The Origin Script Toolbar

The Origin Script Toolbar is an Origin user defined toolbar intended to aid in the development of LabTalk scripts.



Each button on the Origin Script Toolbar performs a function useful to LabTalk programmers.



The **Script Tool** button toggles the Origin Script Tool open and closed. The Origin Script Tool is a convenient user interface for organizing, selecting, displaying, and executing any one of a large number of LabTalk scripts. See "III. The Origin Script Tool" on page 3 for a complete description.




The **Script Window** button functions the same as the Script Window button on the Standard toolbar. It toggles the Script Window hidden or shown.




The **Open Origin Folder** button opens the Origin software folder in Windows Explorer.



The **Open LabTalk Editor** button opens a LabTalk Editor window (opens Code Builder in version 7). Files of type \*.OGS, \*.OPS, \*.INI, \*.TXT, \*.OMG, and \*.\* can be browsed for and opened.

 The **Open NotePad** button opens a NotePad window. Files of type \*.OGS, \*.OPS, \*.INI, \*.TXT, \*.OMG, and \*.\* can be browsed for and opened.

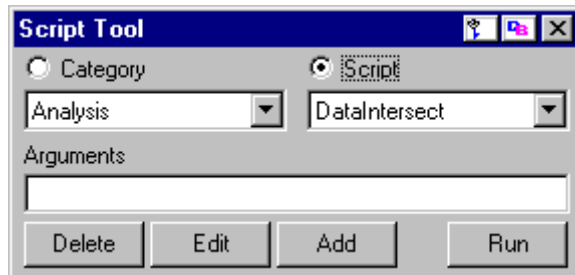
 The **New LabTalk Editor** button creates a new, empty LabTalk Editor window (opens Code Builder in version 7).

 The **New NotePad** button creates a new, empty NotePad window.

 The **Script Toolbar Documentation** button opens an Adobe Acrobat Reader file which contains documentation for the Origin Script Tool and Toolbar.

### III. The Origin Script Tool

The Origin Script Tool is a convenient user interface for organizing, selecting, displaying, and executing any one of a large number of LabTalk scripts. Categories of scripts can be deleted and added. Scripts can be deleted, edited, added, and executed. Several of the twenty-four example scripts provided are useful programs in and of themselves. Others demonstrate how to use various LabTalk commands and objects.





The Category and Script radio buttons specify whether the Delete, Edit, Add, and Run buttons operate on the selected category or on the selected script. To select a script first select its containing category in the Category combination box and then select the script in the Script combination box. A brief message describing the script's function is displayed on the Origin Status Bar when the script is selected. Up to five space separated arguments can be passed to an executed script by entering them in the Arguments edit box. Arguments passed to an executed script will be remembered the next time that script is selected.

To delete the selected category or add a new category enable the Category radio button and then click the Delete or Add button. Deleting a category removes it from the Category combination box but does *not* actually delete the category's subfolder or script files. A deleted category can be re-added later but any scripts in the deleted category will also need to be re-added. Adding a new category automatically creates a subfolder in the \Origin\Scripts folder having the path

\Origin\Scripts\*<CategoryName>*. See "IV. Adding New Categories and Scripts" on page 4 for a more complete description.

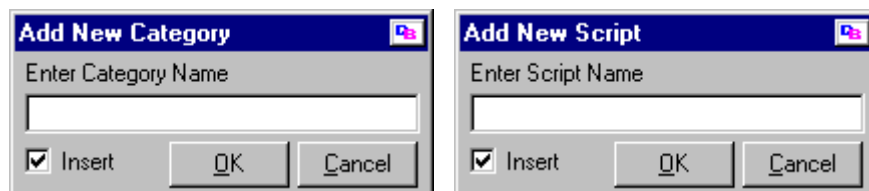
To delete, edit, add, or run a selected script enable the Script radio button and then click the Delete, Edit, Add, or Run button. Deleting a script removes it from the Script combination box but does *not* actually delete its script file. A deleted script can be re-added to its former category without having to recreate the script file. Adding a new script to a category automatically creates an appropriately named and preformatted script file to the selected category's subfolder. The new script file is opened in Code Builder and all that is needed is to enter the LabTalk code and then save the file. See "IV. Adding New Categories and Scripts" below for a more complete description.

Editing a script opens its file in Code Builder. Scripts that come with the Origin Script Tool can be edited and used for examples. Each script file is well documented and contains a complete description, a list of run time assumptions, and a list of required and optional arguments that can be passed. Running a script executes the selected script file to completion and then returns control to the Script Tool.

To close the Script Tool click the close window system icon  in the upper right corner of the Script Tool or click the Script Tool button  on the Script Toolbar to toggle the Script Tool closed.

## IV. Adding New Categories and Scripts

To add a new category enable the Category radio button and then click the Add button. To add a new script enable the Script radio button, select the category in which you want to add the new script, and then click the Add button. After clicking the Add button the appropriate modal dialog box will open:



To add a category or script simply enter the desired name and click OK. New category and script names must not contain any spaces, tabs, or special characters. Category and script names must contain only letters and numbers. Category names must be unique within the tool and Script names must be unique within each category.

If you want to insert a new category or script immediately above the currently selected item in its combination box then check the Insert checkbox. If you want to append a category or script to the bottom of its combination box then uncheck the Insert checkbox. The state of the Insert checkbox is remembered whenever the OK button is clicked. Clicking the Cancel button closes the Add New Category/Script dialog box and takes no action.

## V. Pre-defined Scripts by Category

The Origin Script Tool contains the following pre-defined categories and scripts:

Analysis - DataIntersect, FitPLabel, LFIntersect, Normalize, Redirect2Notes, VLine

Excel - PlotLabel

Graph - LabelXY

Import - Batch

Matrix - Multiply

Numeric - ADDDateAndTime, Factorial, SeparateDateTime

String - Parse

Utility - ProgressLoop1, ProgressLoop2, RepairOPJ

Window - ListNonMin

Worksheet - AveDupXY, CopyRows, DelDupXRows, DeleteRows, DelHiddenDatasets,  
Row2Label

UserDefined - *none*